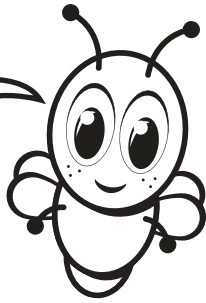


Blinky's Family Challenge

God welcomes everybody ... *to be a part of His Church!*

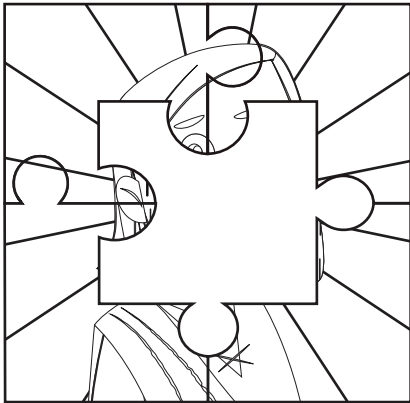


Puzzle Part

When you trust and follow Jesus, you have a special place in God's family. You fit into God's Church like a puzzle piece fits into a puzzle.

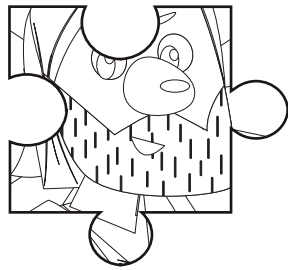
You'll Need

- Scissors



Directions

1. Cut out the puzzle piece below.
2. Take turns putting the puzzle piece in its place and say, "I fit in God's Church."



Review Time!

Say With Me *Ages 2-3*

1. *Say Together:* **God welcomes me!**
2. *Say Together:* **I fit in God's Church!**

Q&A *Ages 4-Kindergarten*

1. **Do you fit in God's Church?** Yes
2. **When you trust and follow Jesus, whose family has a special place for you?** *God's family*



Lead your family through the Bible Plan *Everybody's Welcome* on the YouVersion Bible App.

www.bible.com

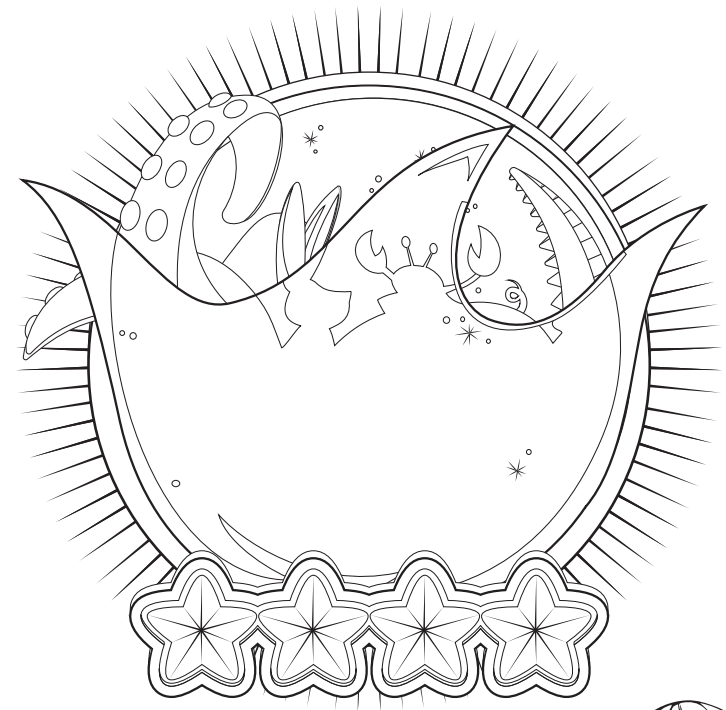


www.life.church/kids

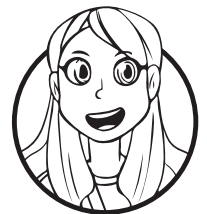
Everybody's Welcome

Peter's vision and Cornelius

Week Four



Tell your family what's in my Adventure Bag!



Emily

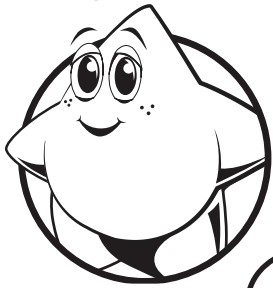


Interact with God's Word through the Bible App for Kids, activities, videos, coloring sheets, parent resources, and more!
www.BibleAppForKids.com



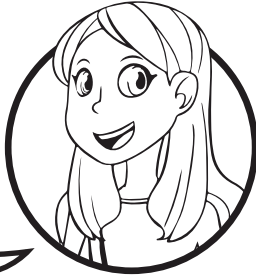
Follow LifeKids to sing along with this month's song, *God's Family*. www.life.church/kidsmusic

Shine



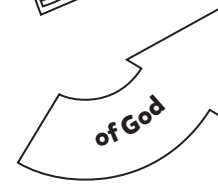
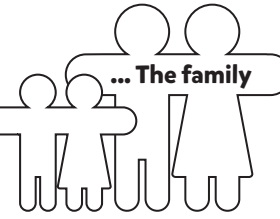
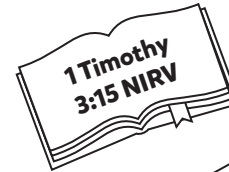
Question:
Hey friends!
**What is the
Church?**

Emily



Answer: Say it with
me! **The Church is
God's family!**

Say the Bible verse with me!



The puzzle, globe, and welcome mat remind me that
everybody has a place in God's family!

Put a sticker on each Picture Pass.

